

FLORIDA ADULT EDUCATION

STATE EXPENDITURES

(FY 2005-06)

School Districts	\$236,731,575
Community Colleges	\$71,014,858
Charter Tech	\$2,181,221
Total	\$309,929,654

FEDERAL ALLOCATIONS

(FY 2007-2008)

Adult Education and Family Literacy	\$27,583,913
English Literacy and Civics Education	\$5,314,225
Total	\$32,898,138

REPORT CARD DATA

*USDOE National Reporting System (NRS)
Annual Performance Report (FY 2005-2006)*

ENROLLMENTS

Adult Basic Education	110,734	37%
Adult Secondary Education	90,189	30%
English Literacy	103,624	33%
Total	304,547	100%

NUMBER OF ADULT EDUCATION PROVIDERS

School Districts	54
Community Colleges	17
Community-based Organizations	15
Department of Corrections	1
Native American Tribes	1

PARTICIPANT STATUS

Employed	158,747
Unemployed	145,588
Correctional Setting	15,543
On Public Assistance	46,828
Workplace Literacy Program	9,229
Other Institutionalized	16,225

TEACHERS

Full-time	1,104	4%
Part-time	6,965	96%

Florida Enrollment for Program Year (PY) 2003-06

	ABE	ASE	ESL
PY 2005-06	110734	90189	103624
PY 2004-05	130805	103004	114310
PY 2003-04	145051	99953	125891

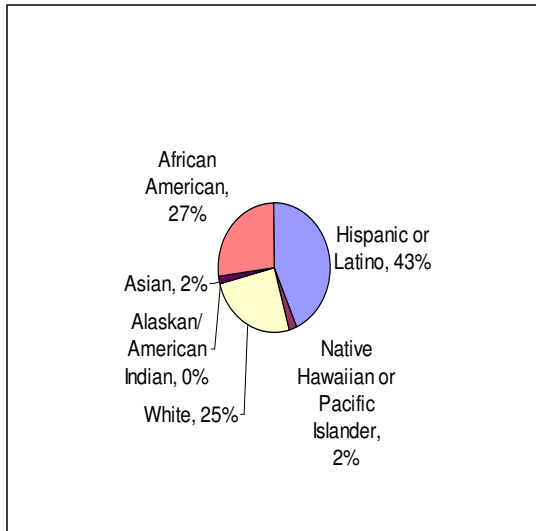
Education Level Completion PY – 2003-06

	Beginning ABE Literacy	Beginning Basic	Low Intermediate to Basic	High Intermediate to Basic	Low Adult Secondary	High Adult Secondary
PY 2003 - 04	45%	29%	30%	32%	53%	22%
PY 2004 - 05	51%	32%	32%	34%	61%	58%
PY 2005 -06	32%	31%	32%	36%	59%	58%

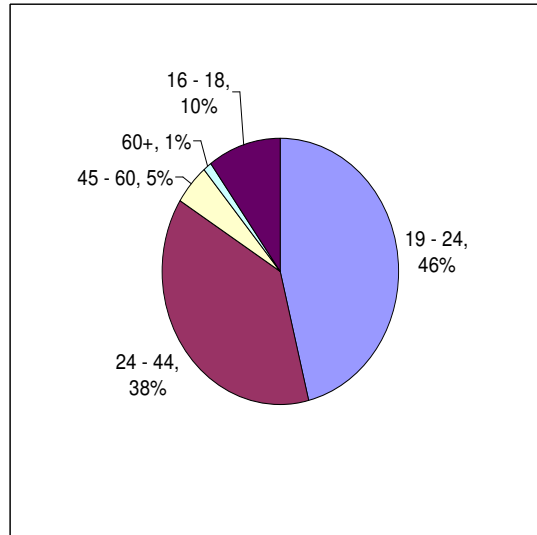
	Beginning ESL Literacy	Beginning ESL	Low Intermediate to ESL	High Intermediate to ESL	Low Advanced ESL	High Advanced ESL
PY 2003 - 04	35%	39%	36%	30%	30%	24%
PY 2004 - 05	34%	34%	32%	26%	28%	17%
PY 2005 -06	24%	24%	24%	23%	21%	18%

Source: Fiscal Year 2005-2006 Adult Education Report Card Division of Workforce Education, Florida Department of Education

**Enrollment by Ethnicity
PY 2005-2006**



**Enrollment by Age
PY 2005-2006**



Source: Fiscal Year 2005-2006 Adult Education Report Card Division of Workforce Education, Florida Department of Education

Community Based Literacy Organizations FY 05-06

Organizations reporting	53
Total Active Tutors	3,456
Other Active Volunteers	854
Volunteer Hours	285,085
Adult Learners Served	5,786
Value of Contributed Volunteer Hours	\$5,145,784

Source: Florida Literacy Coalition

